

DEUS RRC PVT. LTD.



Leading manufacturer of SNT Radio Remote Control Systems & other Crane Control Equipments.

- Plot No.4319, G.I.D.C, Vatva, Phase IV, Ahmedabad - 382445, Tel: 079-25841148, E-mail:sales@sntrrc.com
- 120, Acharya Ind. Estate, Tejpal Compound, Andheri-kurla Road, Sakinaka, Mumbai-400 072
Tel. : +91 7506507534 / 9821092946 E-mail: mail@sntrrc.com

DEUS - SNT C - Rail Festooning Systems

Series 30:

Applications : Moving Pendant Systems, Cross travel for cranes, Energy and Data transmissions for various applications.

Line 30 Characteristics are:

Bar Height: 30 mm

Load Capacity: 100 kg/m



Introduction

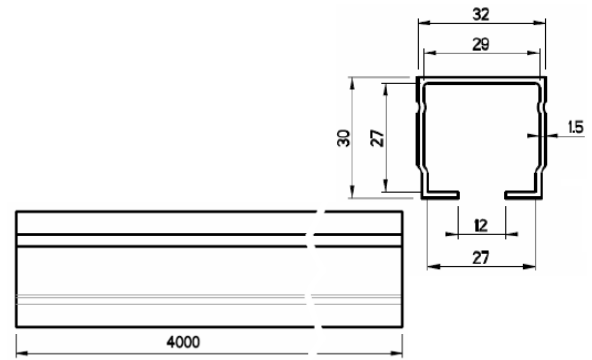
The festoon system is the traditional system for the energy transmission for various type of handling equipment. They are used to manage cables and hoses which provide power or necessary gaseous/ liquid media to moveable machinery.

Line 30 is made of a "C" rail bar fixed along the crane movement line. The single cable is supported by trolley that slides inside the "C" rail bar is offer a complete selection of items and accessories to customize them according to the customer needs.

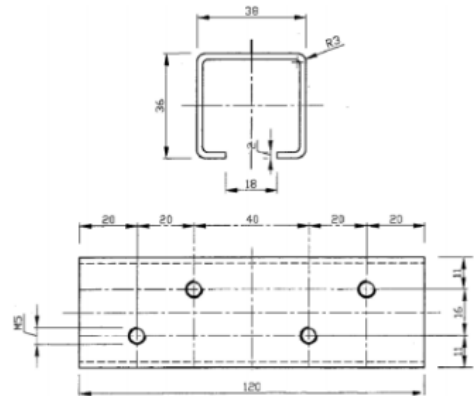
COMPONENTS

C Rail	'C'rail bar are 4 meter standard length.
Joint Clamp	use to joint 2 C-rail Sections
Hanger Clamp	To be placed at every 1.5 meters to ensure the fastening of the 'C'rail to the structure.
Cable Trolley	To be placed at every 1.5 meters. It moves in the profile which carries cable with help of bearing
Towing Trolley	Required 1 Nos. for each span which moves together with device to be fed.
Fixed Trolley	Placed at the begining of the C - Rail section
End Stop	Placed at the end of C - Rail section to avoid the fallen down of the trolleys

COMPONENT DETAILS

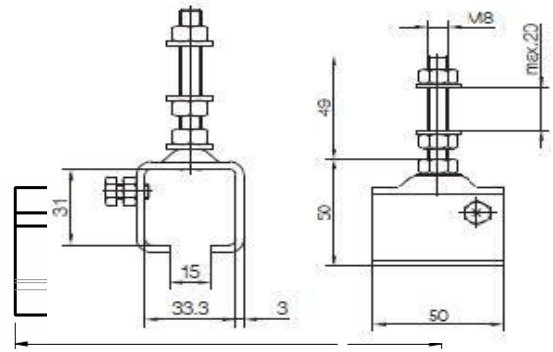


C-Rail Bar

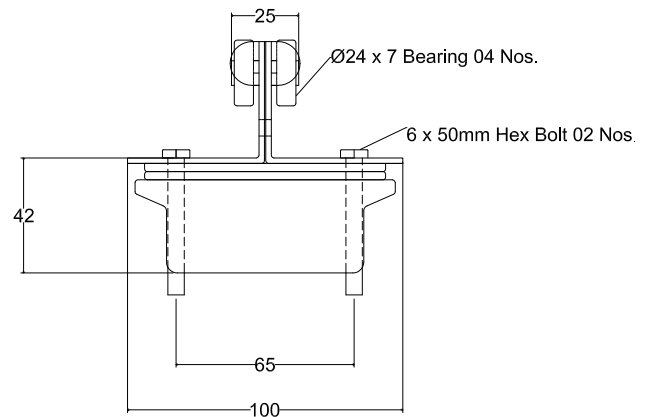


Joint Cover

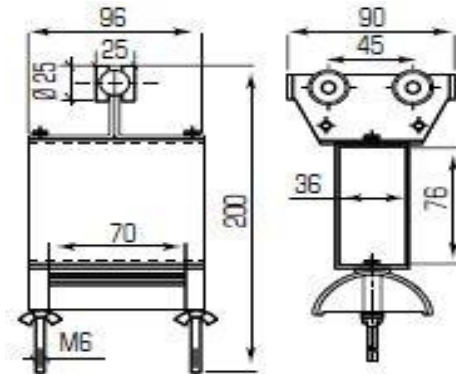
COMPONENT DETAILS



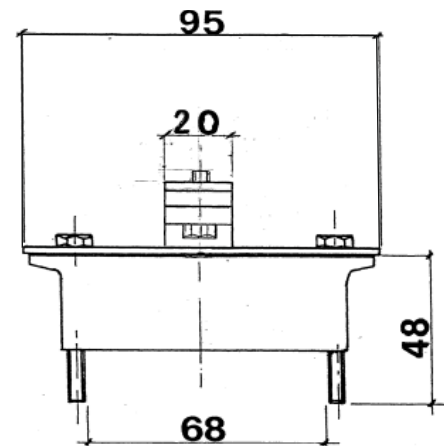
Hanger Clamp



Cable Trolley

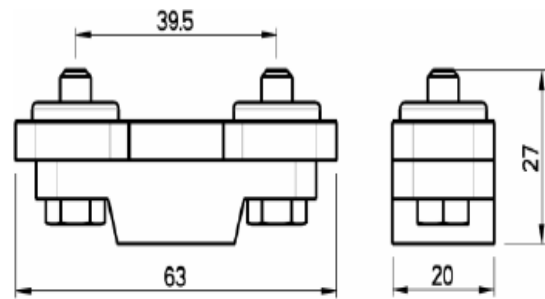


Towing Trolley



Fixed Trolley

COMPONENT DETAILS



End Stop