



DEUS RRC PVT. LTD.

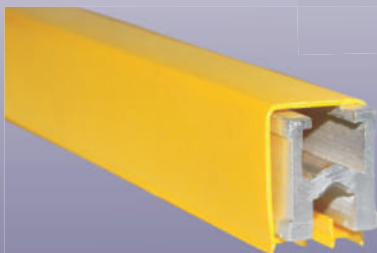
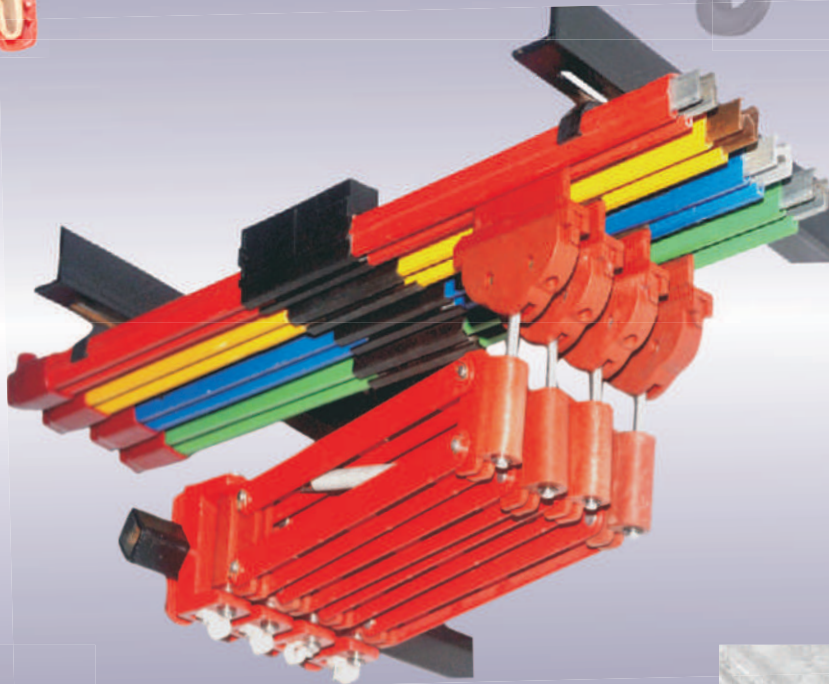
Safety and Technology ... Simply Ahead ...



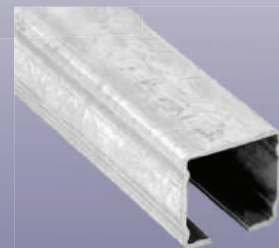
SLB
60-400 Amps



SLP
100-315 Amps



SLV
Heavy Bar
500-2000 Amps



Festoon System
C-Rail Bar

Unit II : Plot No.4319, G.I.D.C, Vatva, Phase IV, Ahmedabad - 382445

Tel: 079-25841148 E-mail:sales@deusrrc.com

Unit III : "G" Wing, Plot No. K-3, Udyog Bhaawan, Near Godrej Company,
Anand Nagar, M.I.D.C., Ambarnath (East) Pin-421509.

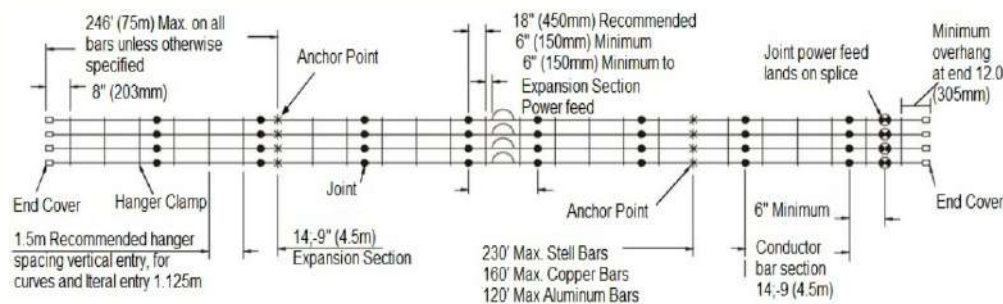
☎ +91 7506507536 E-mail:sales@deusrrc.com

www.sntrrc.com

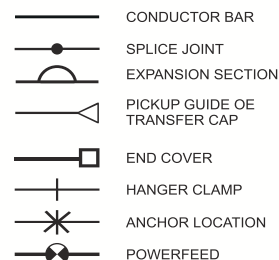


Conductor Bar System Bolted Joint

SLB (60-400Amps)



NOMENCLATURE



Maximum Runway Without Expansions = 492'
Maximum Recommended Hanger Spacing:
1.125Meter.
On all lateral Mount Systems
Curved Systems (Curved Section Only)

FEATURES

- Quick & easy Installation.
- Collector Shoes track Accurately on V Contact Bar.
- Bolted Joint.
- Insulating cover shaped to shed from water and dust & Finger Safe.
- 60 to 400Amps. conductor in same size.
- Requires fewer joints and expansion joints.
- Track Configuration : Straight or Curved.
- Suitable for Indoor / Outdoor Installation

Technical Data SLB-Bolted Joint Conductor Bar System

	Galvanized			Copper			Aluminum / Stainless Steel		
Type	BG	BG	BG	BC	BC	BC	BA	BA	BA
Nominal Current	60A	100A	125A	160A	250A	400A	200A	315A	400A
Maximum System Voltage AC or DC	600V	600V	600V	600V	600V	600V	600V	600V	600V
Resistance R (F or DC) At 35°C (Ω /m)	0.00358	0.00286	0.00193	0.00034	0.00027	0.00018	0.00030	0.00026	0.000199
Impedance Z (F or DC) At 35°C (Ω /m)	0.00360	0.00289	0.00196	0.00036	0.00030	0.00022	0.00032	0.00028	0.00023
Bar Length	4.5m	4.5m	4.5m	4.5m	4.5m	4.5m	4.5m	4.5m	4.5m
Support Pitch Standard	1250mm			1250mm			1250mm		
Min Pitch Center Standard	43mm	43mm	43mm	43mm	43mm	43mm	43mm	43mm	43mm
Temperature	Standard (Red, Yellow, Blue & Green) (160°F (71.1°C))			Medium (Heat) (250°F (121.1°C))					
Material	PVC			Polycarbonate					
Dielectric Strength	180Kv/cm			240Kv/cm					
Flame Test	Self extinguishing			Self extinguishing					

Note :- q Expansion Section 150m.

q Minimum Bending Radius 1.5m.

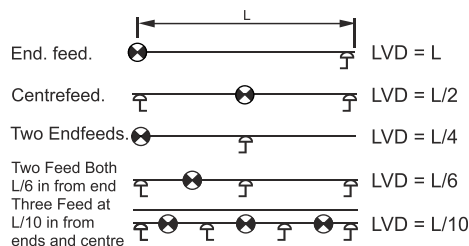
TECHNICAL PARAMETER COMMON TO ALL

Current capacity factor for different ambient temperature

Ambient temperature		35°C	40°C	45°C	50°C	55°C	60°C	65°C	70°C	75°C	80°C	85°C
Standard Insulation	Aluminium rail	1.0	0.92	0.81	0.76	0.68						
	Copper rail	1.0	0.93	0.87	0.82	0.78						
High Temperature Insulation	Aluminium rail					1.0	0.92	0.81	0.76	0.68	0.63	0.59
	Copper rail					1.0	0.93	0.87	0.82	0.78	0.74	0.72

Selection of feed-in points :The feed-in point for every application must be selected because the length rail end is used for calculating the voltage drop.

feed-in points can normally be used.



Voltage Drop

The allowable volt drop determines, the maximum allowable resistance of conductor. The value of volt drop within a conductor system is effected by effective length of system and current drawn.

Volt Drop Calculation

For A. C. Machine 3 phase

$$\Delta U \text{ Volt drop} = \text{length (D)} \times \text{Impedance (Z)}$$

$$X \text{ Current (I)} \times \sqrt{3}$$

$$U \% = \frac{\Delta U}{U_n} \times 100 \text{ [\%]}$$

CURRENT COLLECTOR

SAFELINK Current Collectors Data Sheet



Type	SLCC - 60	SLCC - 125	SLCC - 250
Current Rating	60A	125A	250A
Collector Movement	± 125 ± 50	± 200 ± 60	± 200 ± 60
Mounting Bracket	165qmm bar	255qmm bar	255qmm bar
Mounting Distance from Conductor contact surface	100mm	127mm	127mm
Construction	1 Pole	1 Pole	1 Pole
Spring Loaded Contacts with Springs of non Rusting	Stainless Steel	Stainless Steel	Stainless Steel
Sintered Copper Shoe	125A	125A	125A
Shoe Holder	Nylon	Nylon	ABS
Structure	Metallic	Metallic	Metallic
Suitable to use on Safelink Conductor System On Straight Track	SFM (100/125/250/315A) SFW (60/100/125/160/250/400A)	SFM (60/100/125/160/250/400/200/315A) SFW (500/800/100A)	
On Curved Track	SFM (100/125/250/315A) SFW (60/100/125/160/250/400A)	SFM (60/100/125/160/250/400/200/315A) SFW (60/100/125/160/250/400A)	
Higher Currents	Two Collectors in Tandem to be used for higher current requirements and for expansion assemblies		



SNT - CRANE CONTROL GEARS



Rotary Gear
Limit Switch



Rotary Gear
Limit Switch



Rotary Gear
Limit Switch



FG Rotary Gear
Limit Switch



Lever Type
Limit Switch



Lever Type
Limit Switch



Lever Type
Limit Switch



Cross Bar
Limit Switch



Counter Weight
Limit Switch



Master Controller(IP54)



Master Controller



34 kg
ST 535

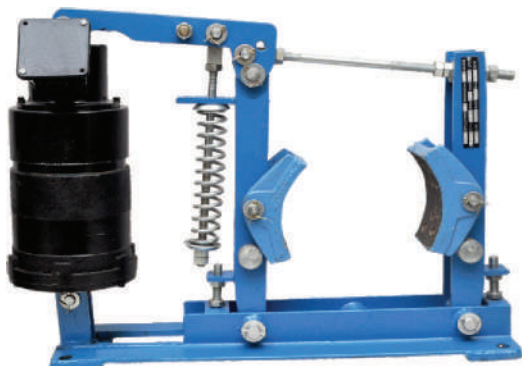
Electro Hydraulic Thruster



18 kg
ST 520



Anti Collision Device



THRUSTER BRAKE



DSL Indicating-Lamp



DBR / RESISTANCE BOX

FestoonSystem-Line30

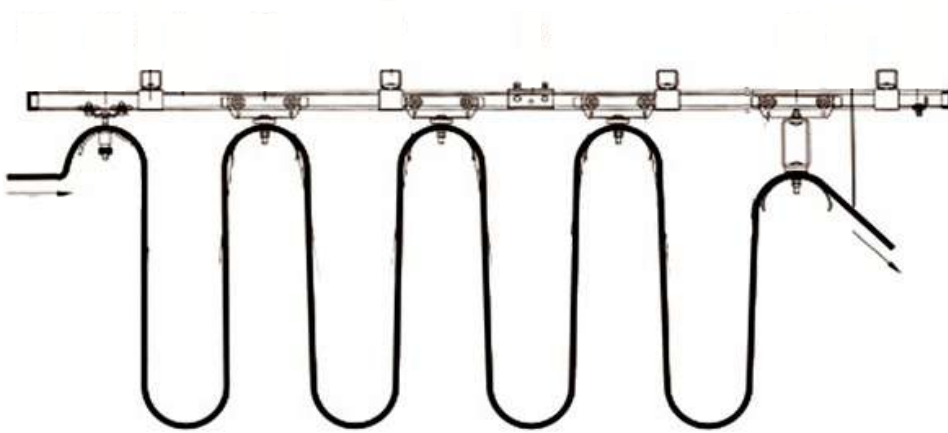
Series 30:

Applications : Moving Pendant Systems, Cross travel for cranes, Energy and Data transmissions for various applications.

Line 30 Characteristics are:

Bar Height: 30 mm

Load Capacity: 100 kg/m



FESTOON SYSTEMS PARTS



C-Rail Bar



Towing Trolley



Hanger clamp



Fixed trolley



Joint Cover



End stop



Cable Trolley

Radio Remote Cotrols



Some common features :

Operating Frequency	UHF(310.00 to 336.00 Mhz)
Operating Range	100m (except SPORT = 60m)
Channel Spacing	25KHz
RF Power Output	10mW
Response Time	<24 ms
Active Emergency Responding Time	<24 ms
Hamming Distance	>=6
Power Consumption	<15mA
Standby Power Consumption:	<1mA
Battery	2 AA Size Alkaline Battery
Operating Temperature	-20° C to 70° C
Coding Key	FMSK
Modulation	Frequency Modulation

RECEIVERS



UP TO 8 RELAY OUTPUT

Wiring: 13 PIN Connector
Dimension: 230x125x65 mm
Weight: 1.1 Kg



UP TO 21 RELAY OUTPUT

Wiring: 26 PIN Connector
Dimension: 270x200x90 mm
Weight: 1.8 Kg



UP TO 24 RELAY OUTPUT

Wiring: 48 PIN Connector
Dimension: 260x250x90 mm
Weight: 2.5 Kg

IMET Radio Remote Control Systems



WAVE L



WAVE S



ARES C



ARES E

ZEUS RANGE



ZEUS B2



ZEUS M6



ZEUS NJ

SPECIAL APPLICATIONS



ZEUS B3



ZEUS M8



ZEUS B4



ZEUS NJ II